

TRISTAN

Featuring



The name Tristan can trace its roots to the Knights of the Round Table. With its Welsh roots meaning “clanking sword” as in the sound made by knights and warriors in battle. The Tristan lever draws its design cues from the mighty faceted Broadsword swords used in battle. Go ahead, make a bold statement of design.

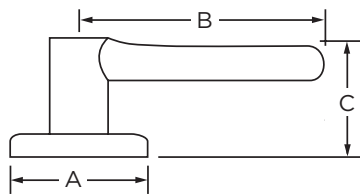
- Features SmartKey® Re-Key Technology with BumpGuard™ Protection
- ANSI/BHMA Grade 3 Certified Security & Quality
- Lifetime Mechanical and Finish Warranty



Specifications

Door prep	Cross Bore 2 1/8". Edge Bore 1".
Backset	Adjustable to 2-3/8" or 2-3/4".
Door Thickness	1 3/8" - 1 3/4" standard, 2 1/4" doors optional on 101 and 535 functions only.
Cylinder	SmartKey Security™
Faceplate	1" x 2 1/4". Specify round corner, square corner or drive-in.
Strikes	2 1/4" full lip standard. Specify round corner, square corner. Other options available.
Bolt	1/2" throw.
Door Handing	Reversible for right or left-handed doors. Specify handing only on dummy and handleset interiors only.
ANSI/BHMA	A156.2 Grade 3 (all functions except 12).
UL	Optional 20 min UL fire rating.
Warranty	Lifetime Mechanical and Lifetime Finish

Dimensions



Design	A	B	C	C (keyed)
Tristan	2-5/8"	4-7/16"	1-7/8"	2-7/16"



Weiser's SmartKey™ Technology provides homeowners with the superior security that is resistant to a variety of common break-in methods.

This technology also allows homeowners to re-key their locks themselves in seconds, rendering lost or unreturned keys useless.

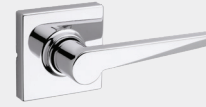
4 Designer Finishes



514 | Iron Black



15 | Satin Nickel

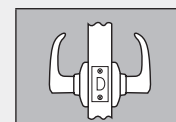


26 | Polished Chrome

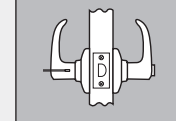


26D | Satin Chrome

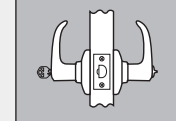
Functions



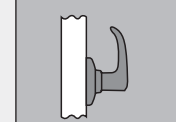
101 Passage/Hall/Closet: Both levers always free.



331 Privacy/Bed/Bath: Both levers locked or unlocked by turnbutton inside. Outside lever unlocked by emergency key.



535 Keyed Entry: Both levers locked or unlocked by key outside or turnbutton inside.



12 Half Dummy Trim, Surface Mounted: For doors where only a pull is required. Must specify right or left hand.

*Vision Critical, Brand Performance Research, 2017



weiserlock.com | 1-800-501-9471

Weiser is a trademark of Spectrum Brands, Inc.
© 2019 Spectrum Brands, Inc.